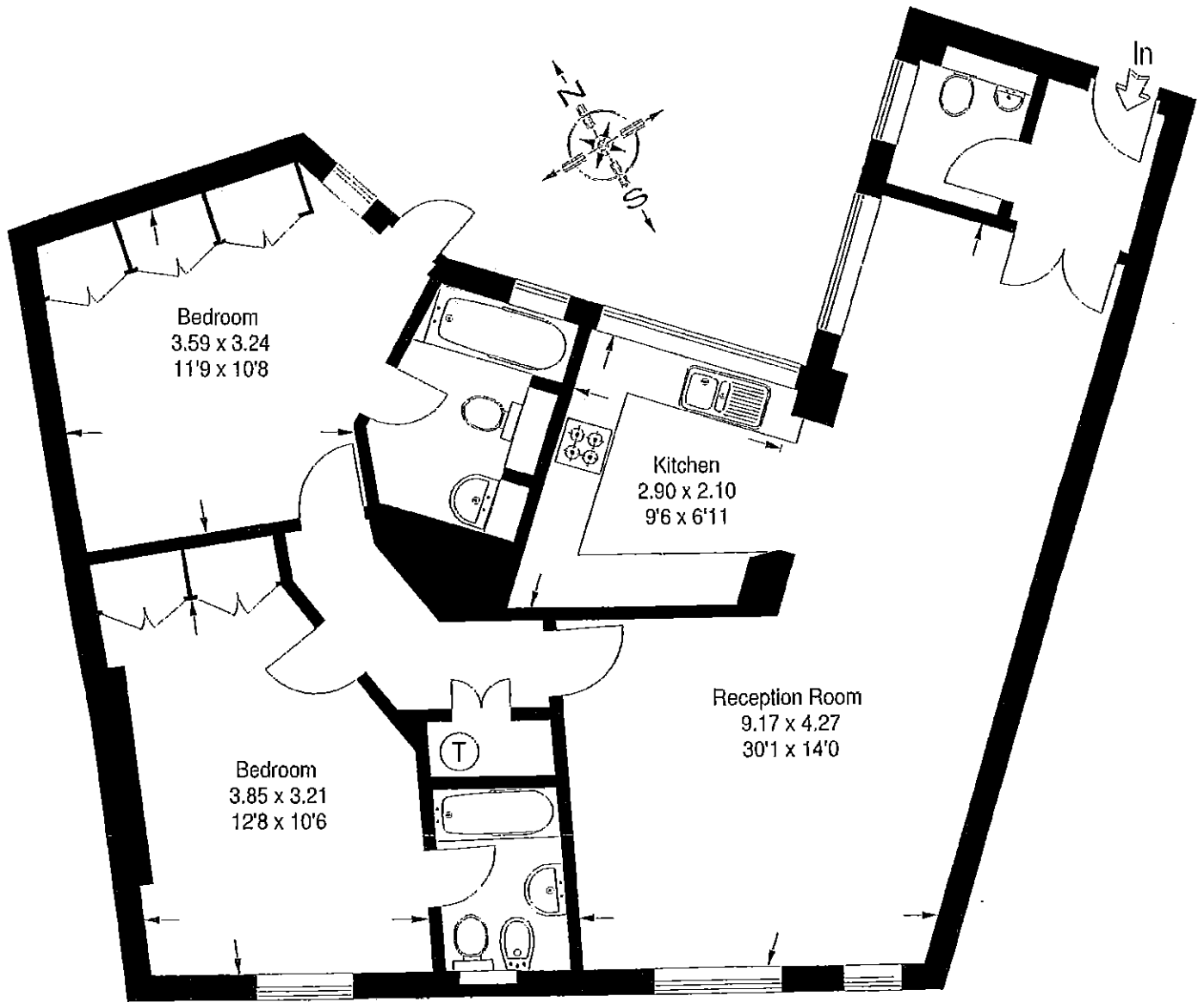


Strathmore Court Flat 17, Park Road, NW8

Approximate Gross Internal Area :-
92 sq m / 990 sq ft



First Floor

FLOORPLANZ © 2007

01483 755510 Ref 38083

This illustration is for identification purposes only. Measured & drawn in accordance with RICS / PMA guidelines. Not drawn to scale, unless stated. Dimensions shown are to the nearest 7.5 cm / 3" and are through cupboard / wardrobes to wall surfaces where possible or where indicated by arrow heads. Whilst every care is taken in the preparation of this plan, please check all dimensions shapes & compass bearings before making any decisions reliant upon them.