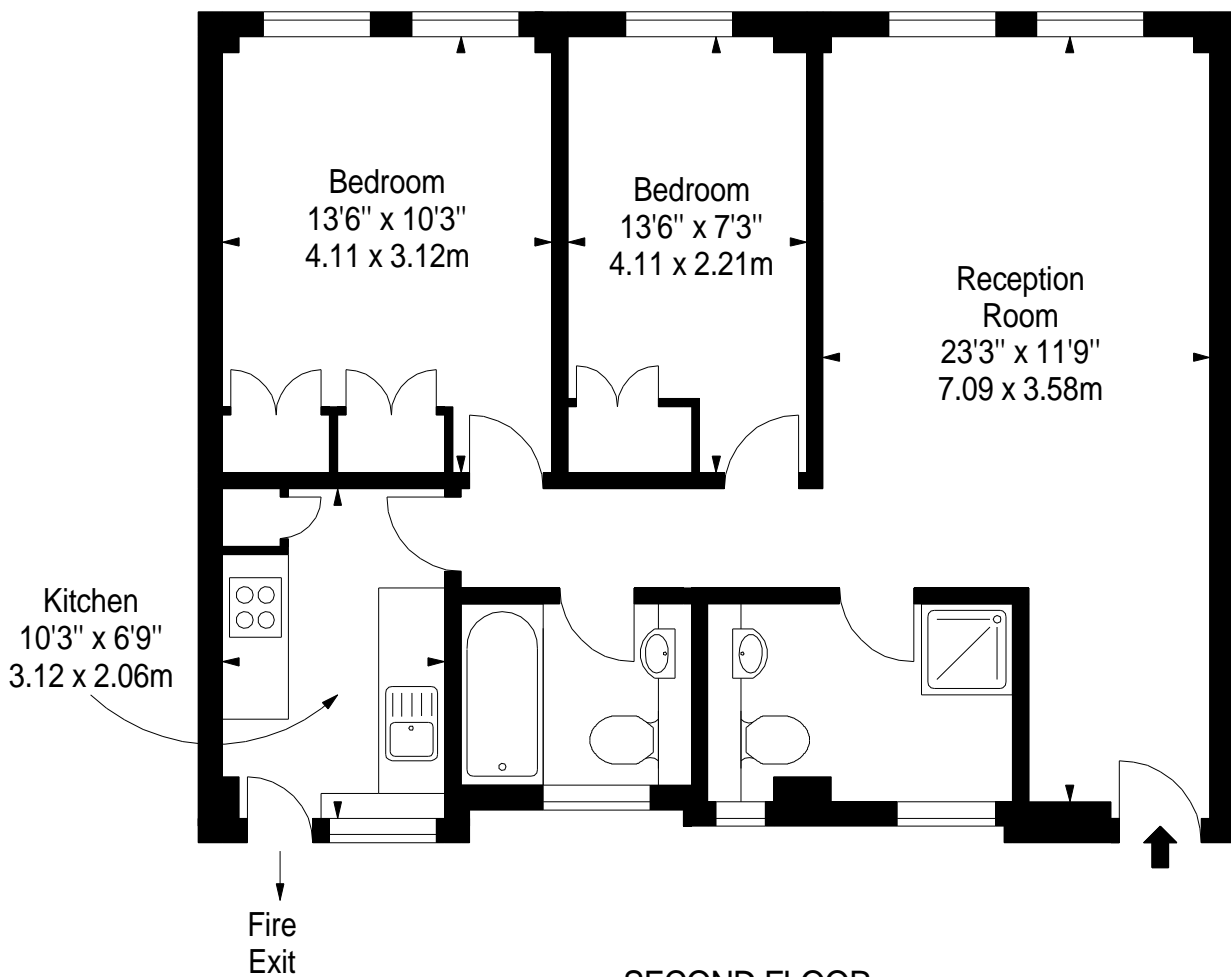


30 PELHAM COURT, SW3

APPROX. GROSS INTERNAL AREA *
696 Ft² - 64.66 M²

ILLUSTRATION FOR IDENTIFICATION PURPOSES ONLY. NOT TO SCALE
* As Defined by RICS - Code of Measuring Practice



SECOND FLOOR

BKR

www.bkrfloorplans.co.uk
T: 0845 257 2023
© BKR 2010